



Highlights

- Offers a unified management platform that automates and streamlines endpoint systems and security management
 - Serves as the single source of truth into the state of all organizational computing assets located anywhere—fixed or mobile, physical or virtual
 - Reduces the barriers by minimizing switching costs, disruptions, and the new-tool learning curve
-

Why switch to IBM Tivoli Endpoint Manager, built on BigFix technology?

Real-time visibility and control over every endpoint

Moving to a better architecture offers significant ROI

It's never an easy decision to switch out existing tools for a new one, but high operating costs and functional needs can sometimes make it necessary. IBM Tivoli® Endpoint Manager, built on BigFix® technology, can significantly reduce the barriers by minimizing switching costs, disruptions, and the new-tool learning curve. Customers have seen significant cost savings consolidating many tools down to the single Tivoli Endpoint Manager architecture. These savings come from a wide variety of areas including elimination of infrastructure, reductions in administration efforts by 20:1, addition of new cost-saving functionality such as power management, and lower vendor management costs.

In a world accustomed to multiple fragmented technologies and point solutions, Tivoli Endpoint Manager offers an efficient and robust alternative: a single endpoint management platform that automates and streamlines systems and security management. Purpose built for the challenges of today's distributed enterprises—large and small—Tivoli Endpoint Manager provides real-time visibility and control across asset discovery and detailed endpoint hardware and software inventory, software and patch distribution, OS deployment, power management, security configuration and vulnerability management, and anti-malware management across Microsoft® Windows®, Linux®, UNIX®, and OS X.



Comprehensive coverage, significantly fewer man-hours to complete tasks, drastically reduced software license and electricity costs, consolidation of tools and vendors, elimination of hardware and software infrastructure... it all adds up to real-world payback periods of months.

What makes the Tivoli Endpoint Manager architecture better?

The IBM Tivoli Endpoint Manager architecture sets out to solve a problem: Why do most systems and security management tools just not work as promised in the real world across the entire enterprise? Long before the first product release, the company spent years developing a platform that could be used to successfully deliver any type of content, command, or query to any computer, anywhere. It had to operate in real-world conditions and be easy to implement, fast, and accurate.

By offering complete, accurate and up-to-the-minute situational awareness, Tivoli Endpoint Manager serves as the single source of truth into the state of all organizational computing assets located anywhere—fixed or mobile, physical or virtual. Tivoli Endpoint Manager's patented technology distributes computing power to the devices themselves, using the intelligent Tivoli Endpoint Manager agent to provide a level of visibility and control not possible in legacy solutions. This level of innovation translates into significant advantages in speed, flexibility, and scalability, while reducing the infrastructure and training costs associated with traditional systems and security management.

IBM Tivoli Endpoint Manager customers can...

Consolidate a large number of patch and configuration management tools down to one in just two days.

—*Albany County*

Reduce patch cycles from weeks to minutes while improving compliance by 55 percent and addressing HIPAA concerns. Then switch AV vendors without a single employee noticing anything other than improved computer performance.

—*Concord Hospital*

Successfully compete against commercial service providers for internal business thanks to Tivoli Endpoint Manager's low TCO.

—*Edmonton School District*

Save \$4.2M per year in electricity costs.

—*Miami Dade School District*

Deploy to 350+ restaurants in four days, for PCI compliance over 56K links.

—*O'Charley's Restaurants*

Achieve 100 percent compliance with a 24-hour SLA.

—*Purolator*

Utilize Tivoli Endpoint Manager self-service provisioning functions to manage a true 24x7 environment.

—*Singapore Press*

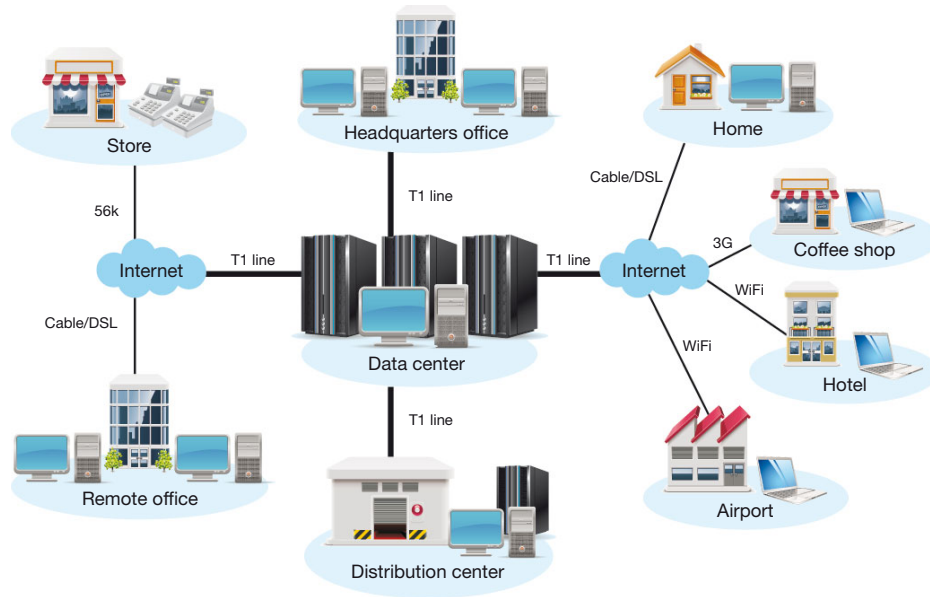
Maintain patch compliance levels of 98.5 percent across 50,000 endpoints.

—*SunTrust Banks*

Reduce patch management FTEs by 20:1, fully automating management of 1000+ locations connected via VPN.

—*Tax Tech, Inc.*

IBM Tivoli Endpoint Manager throughout the enterprise



IBM Tivoli Endpoint Manager enables organizations to manage thousands of endpoints in any location—from servers in the headquarters data center to laptops connected to the Internet in coffee shops.

Each agent acts independently and simultaneously to process policies, report changes, or execute actions—pulling only relevant content from the management server as needed. This parallel processing, combined with the performance optimization of our agent code, results in rapid assessment and remediation cycles, real-time reporting, continuous enforcement, ability to control off-network devices, and minimal network chatter.

The benefits of a distributed architecture

The unique Tivoli Endpoint Manager architecture applies to all available products. From patch and software distribution to power management to software license compliance to antimalware—it is all managed through a single console and a single endpoint agent. This unified approach gives our customers:

Easy deployment and management. Tivoli Endpoint Manager can be installed in just days, even across very large or highly distributed environments, and can then be used to remove outdated tools quickly and cleanly

Pervasive visibility. Distributed scanning and deep agent inspection makes it possible for operators to see anything about any computer anywhere

Extensibility. No need to roll out additional software or hardware when purchasing additional functionality from Tivoli Endpoint Manager open database schema and SOAP APIs also makes it easy to integrate with other IT tools

Speed. Extremely specific ad-hoc queries can be executed and answered across a globally distributed environment in minutes

Superior control. Secure, manage, and report on endpoints through any type of connection: WAN, LAN, 56K, satellite, public Internet

Scalability. Support for up to 250,000 endpoints from a single management server

Low profile. Agent and query language have all been optimized for near-invisible impact to network bandwidth and endpoint performance

Real-time reporting. With the agents reporting any change in status, there is no need to initiate a new scan to know the current state of your assets

Continuous compliance. Agents continuously monitor for compliance and can be set to automatically reapply any policy, patch, or misconfiguration

Breadth of coverage. Cross-platform support for Windows, Mac, UNIX, or Linux—whether physical or virtual, fixed or mobile

10 reasons customers have made the switch

1. Achieve visibility and control over all endpoints regardless of location, mobility, OS, connection type, bandwidth size, or presence of local IT staff
 2. Reduce the amount of infrastructure needed to manage the infrastructure
 3. Balance global visibility with distributed administrator control
 4. Decrease the burden on the network, the endpoints, and the IT staff
 5. Move from reactive compliance reporting to proactive security by bridging the audit-remediation gap with continuous compliance enforcement at the endpoint
 6. Reduce the number of tools, agents, and vendors for lower costs and better manageability
 7. Achieve accurate patch, configuration, and AV compliance reports to prevent malware outbreaks
 8. Shorten vulnerability windows by implementing patches and AV signatures to every applicable computer in hours instead of weeks
 9. Identify and fill in gaps in security coverage and systems management capabilities
 10. Better manage multiple customers in a Service Provider or SaaS offering with multitenancy
-

For more information

To learn more about IBM Tivoli Endpoint Manager solutions, please contact your IBM marketing representative or IBM Business Partner, or visit the following website:

ibm.com/tivoli/endpoint

About Tivoli software from IBM

Tivoli software from IBM helps organizations efficiently and effectively manage IT resources, tasks and processes to meet ever-shifting business requirements and deliver flexible and responsive IT service management, while helping to reduce costs. The Tivoli portfolio spans software for security, compliance, storage, performance, availability, configuration, operations and IT life-cycle management, and is backed by world-class IBM services, support and research.



© Copyright IBM Corporation 2011

IBM Corporation
Software Group
Route 100
Somers, NY 10589 U.S.A.

Produced in the United States of America
March 2011
All Rights Reserved

IBM, the IBM logo, ibm.com, BigFix and Tivoli are trademarks or registered trademarks of International Business Machines Corporation in the United States, other countries, or both. If these and other IBM trademarked terms are marked on their first occurrence in this information with a trademark symbol (® or ™), these symbols indicate U.S. registered or common law trademarks owned by IBM at the time this information was published. Such trademarks may also be registered or common law trademarks in other countries. A current list of IBM trademarks is available on the web at “Copyright and trademark information” at ibm.com/legal/copytrade.shtml

BigFix is a registered trademark of BigFix, Inc., an IBM Company.

Linux is a registered trademark of Linus Torvalds in the United States, other countries, or both.

Microsoft and Windows are trademarks of Microsoft Corporation in the United States, other countries, or both.

UNIX is a registered trademark of The Open Group in the United States and other countries.

Other product, company or service names may be trademarks or service marks of others.

References in this publication to IBM products and services do not imply that IBM intends to make them available in all countries in which IBM operates.

Product data has been reviewed for accuracy as of the date of initial publication. Product data is subject to change without notice. Any statements regarding IBM's future direction and intent are subject to change or withdrawal without notice, and represent goals and objectives only. IBM products are warranted according to the terms and conditions of the agreements (e.g. IBM Customer Agreement, Statement of Limited Warranty, International Program License Agreement, etc.) under which they are provided.

The customer is responsible for ensuring compliance with legal requirements. It is the customer's sole responsibility to obtain advice of competent legal counsel as to the identification and interpretation of any relevant laws and regulatory requirements that may affect the customer's business and any actions the customer may need to take to comply with such laws. IBM does not provide legal advice or represent or warrant that its services or products will ensure that the customer is in compliance with any law or regulation.

BigFix was acquired by IBM in July 2010.



Please Recycle